

Snapmaker 2.0

# A250

Dimensions (W × D × H)

405 × 424 × 490 mm

## 3D Printing

Build Volume (W × D × H)

230 × 250 × 235 mm

Heated Bed Temperature

Up to 100°C

## Laser Engraving and Cutting

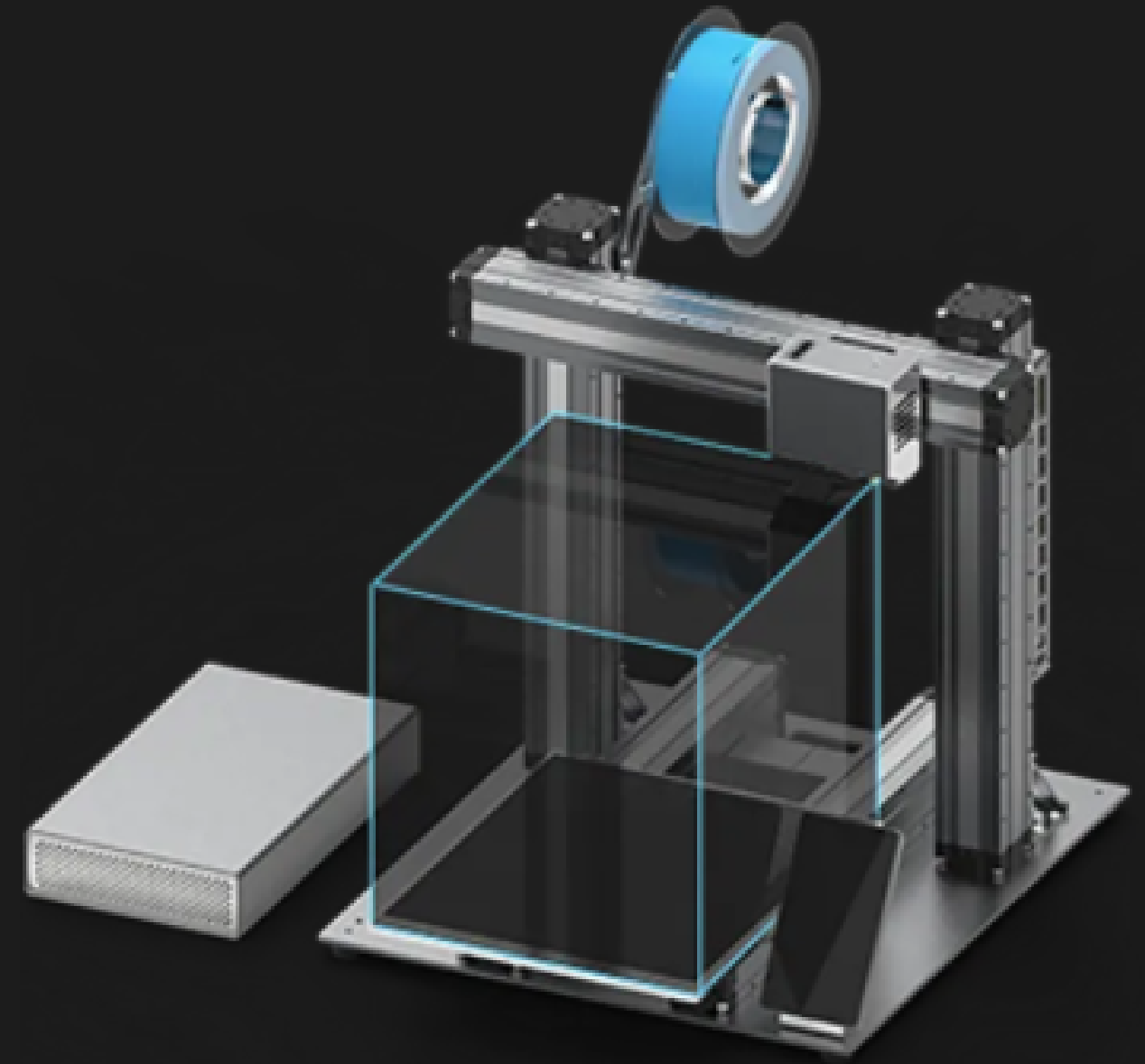
Work Area (W × D)

230 × 250 mm

## CNC Carving

Work Area (W × D × H)

230 × 250 × 235 mm



Frame Material	Aluminum alloy
Connectivity	Wi-Fi, USB cable, USB flash drive
Touchscreen	5", Android OS, Quad Core A7 CPU @ 1.1GHz
Supported Software	Snapmaker Luban or third-party software
Supported File Types	.stl, .obj, .svg, .jpeg, .png, .bmp, .dxf, more formats to be added
Supported OS	MacOS, Windows, Linux
Rated Power	320 W

### 3D Printing

Layer Resolution	50–300 microns
Nozzle Diameter	0.4 mm
Nozzle Temperature	Up to 275°C
Supported Materials	PLA, ABS, PETG, TPU, wood filled PLA, more being tested

### Laser Engraving and Cutting

Camera	Built-in camera
Laser Power	1600 mW
Wavelength	450 nm
Safety Class	Class 4
Supported Materials	Wood, leather, plastic, fabric, paper, non-transparent acrylic, more being teste

### CNC Carving

Shank Diameter	0.5–6.35 mm
Spindle Speed	6,000–12,000 RPM
Supported Materials	Wood, acrylic, PCB, carbon fiber sheet, jade, more being tested