

Snapmaker 2.0

# A150

Dimensions (W × D × H)

300 × 316 × 390 mm

## 3D Printing

Build Volume (W × D × H)

160 × 160 × 145 mm

Heated Bed Temperature

Up to 110°C

## Laser Engraving and Cutting

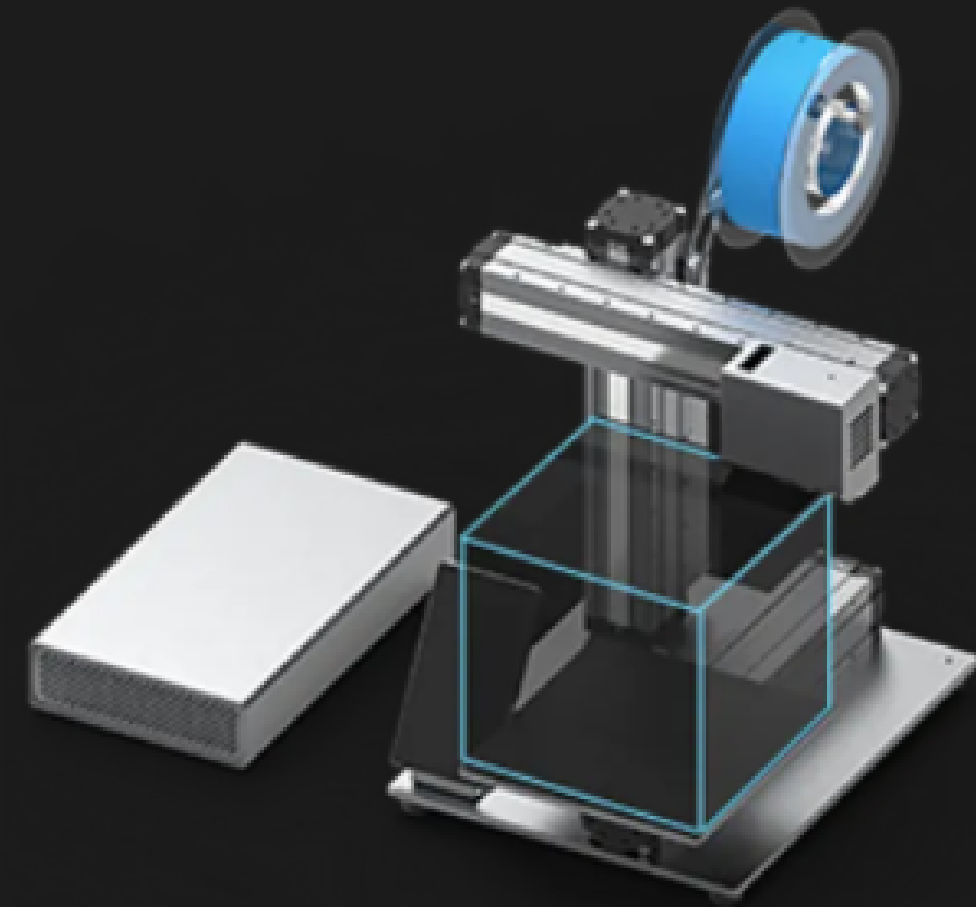
Work Area (W × D)

160 × 160 mm

## CNC Carving

Work Area (W × D × H)

160 × 160 × 90 mm



|                      |   |
|----------------------|---|
| Frame Material       | Aluminum alloy  |
| Connectivity         | Wi-Fi, USB cable, USB flash drive                                   |
| Touchscreen          | 5", Android OS, Quad Core A7 CPU @ 1.1GHz                           |
| Supported Software   | Snapmaker Luban or third-party software                             |
| Supported File Types | .stl, .obj, .svg, .jpeg, .png, .bmp, .dxf, more formats to be added |
| Supported OS         | MacOS, Windows, Linux   |
| Rated Power          | 320 W   |

### 3D Printing

|                     |   |
|---------------------|---|
| Layer Resolution    | 50–300 microns  |
| Nozzle Diameter     | 0.4 mm  |
| Nozzle Temperature  | Up to 275°C   |
| Supported Materials | PLA, ABS, PETG, TPU, wood filled PLA, more being tested |

### Laser Engraving and Cutting

|                     |  |
|---------------------|--|
| Camera              | Built-in camera  |
| Laser Power         | 1600 mW  |
| Wavelength          | 450 nm   |
| Safety Class        | Class 4  |
| Supported Materials | Wood, leather, plastic, fabric, paper, non-transparent acrylic, more being teste |

### CNC Carving

|                     |   |
|---------------------|---|
| Shank Diameter      | 0.5–6.35 mm   |
| Spindle Speed       | 6,000–12,000 RPM  |
| Supported Materials | Wood, acrylic, PCB, carbon fiber sheet, jade, more being tested |